

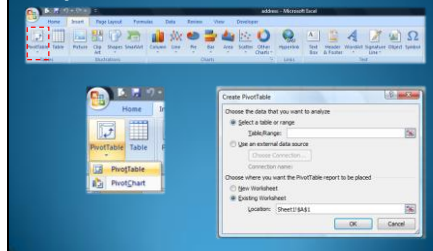
Setting Cell Styles

The screenshot shows the Microsoft Excel ribbon with the 'Conditional Formatting' button highlighted by a red box. The dropdown menu is open, displaying various options for formatting cells based on their values. The 'More Rules...' option is highlighted in blue.

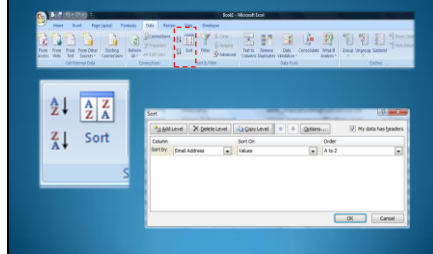
Chart Enhancement

[illegible]

Improved Pivot Table



Sorting



Save as PDF or XPS file

